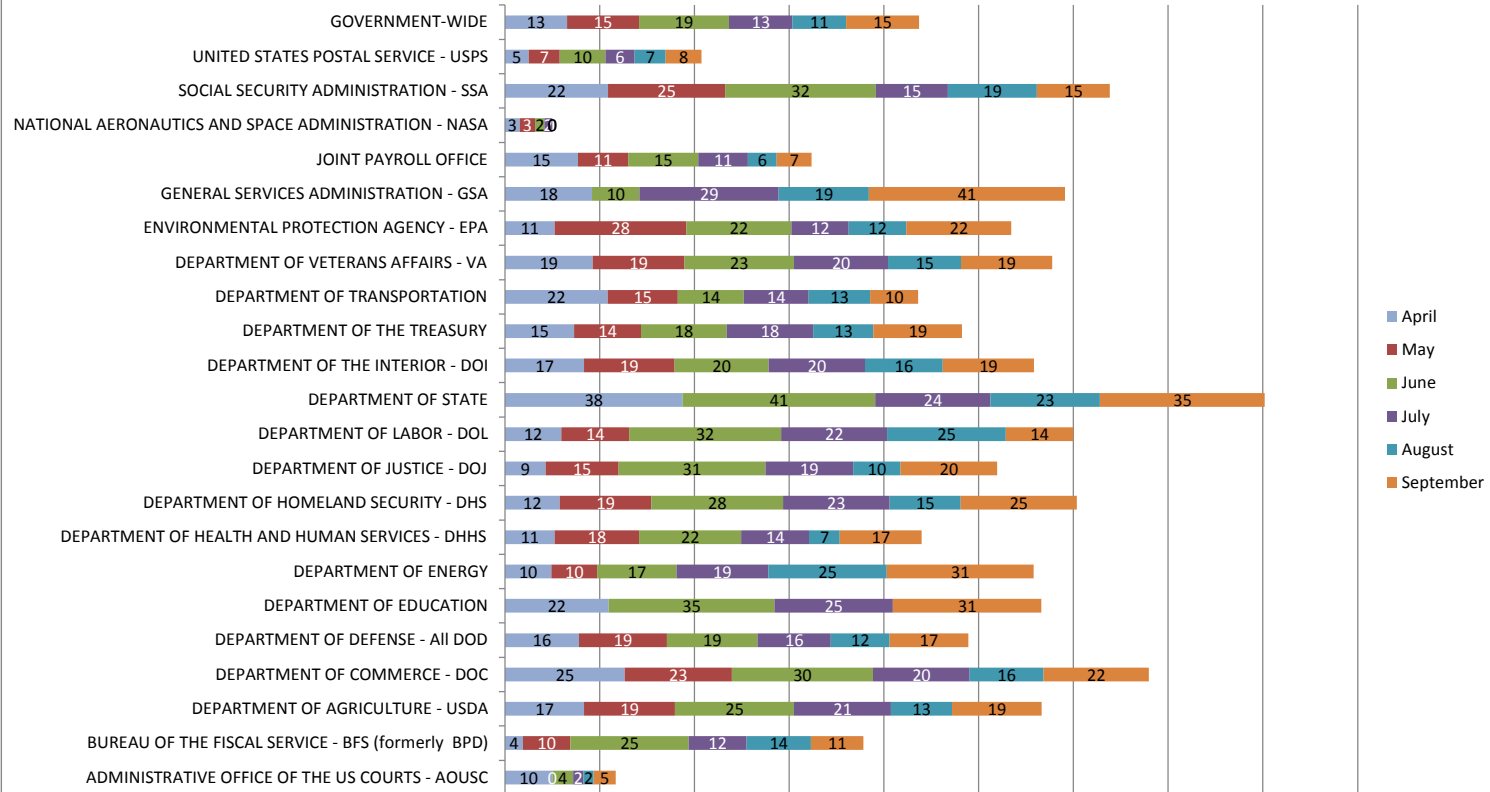


Percentage of CSRS/FERS New Claims w/ Errors by Agency



Agency	April		May		June		July		August		September	
	# of Cases	% of Cases w/ Errors	# of Cases	% of Cases w/ Errors	# of Cases	% of Cases w/ Errors	# of Cases	% of Cases w/ Errors	# of Cases	% of Cases w/ Errors	# of Cases	% of Cases w/ Errors
ADMINISTRATIVE OFFICE OF THE US COURTS - AOUSC	50	10	53	0	45	4	89	2	48	2	43	5
BUREAU OF THE FISCAL SERVICE - BFS (formerly BPD)	53	4	30	10	36	25	41	12	22	14	27	11
DEPARTMENT OF AGRICULTURE - USDA	419	17	234	19	354	25	361	21	194	13	206	19
DEPARTMENT OF COMMERCE - DOC	150	25	62	23	94	30	103	20	64	16	63	22
DEPARTMENT OF DEFENSE - All DOD	2,363	16	924	19	2,182	19	2,129	16	1,577	12	1,671	17
DEPARTMENT OF EDUCATION	32	22			20	35	16	25			16	31
DEPARTMENT OF ENERGY	102	10	31	10	48	17	67	19	36	25	29	31
DEPARTMENT OF HEALTH AND HUMAN SERVICES - DHHS	257	11	45	18	134	22	168	14	92	7	110	17
DEPARTMENT OF HOMELAND SECURITY - DHS	430	12	243	19	435	28	454	23	254	15	253	25
DEPARTMENT OF JUSTICE - DOJ	545	9	247	15	258	31	260	19	150	10	216	20
DEPARTMENT OF LABOR - DOL	59	12	35	14	53	32	49	22	28	25	42	14
DEPARTMENT OF STATE	24	38			27	41	37	24	26	23	23	35
DEPARTMENT OF THE INTERIOR - DOI	269	17	131	19	282	20	355	20	159	16	150	19
DEPARTMENT OF THE TREASURY	595	15	297	14	430	18	387	18	197	13	214	19
DEPARTMENT OF TRANSPORTATION	157	22	61	15	137	14	190	14	108	13	109	10
DEPARTMENT OF VETERANS AFFAIRS - VA	896	19	469	19	964	23	995	20	747	15	812	19
ENVIRONMENTAL PROTECTION AGENCY - EPA	57	11	18	28	27	22	58	12	33	12	36	22
GENERAL SERVICES ADMINISTRATION - GSA	38	18			20	10	34	29	21	19	29	41
JOINT PAYROLL OFFICE	39	15	47	11	54	15	38	11	33	6	55	7
NATIONAL AERONAUTICS AND SPACE ADMINISTRATION - NASA	97	3	30	3	54	2	59	2	29	0	20	0
SOCIAL SECURITY ADMINISTRATION - SSA	174	22	73	25	132	32	171	15	117	19	130	15
UNITED STATES POSTAL SERVICE - USPS	2,330	5	1,099	7	1,887	10	3,690	6	1,943	7	1,705	8
GOVERNMENT-WIDE	9,448	13	4,228	15	7,870	19	9,942	13	6,031	11	6,096	15

**The table above shows the retirement application error rates for agencies with at least 15 cases reviewed for the month indicated. The table shows the number of cases for the agency and the percent of cases with errors. If a case has more than one error, it is counted as a single case with an error. The Government-wide results are also shown.